

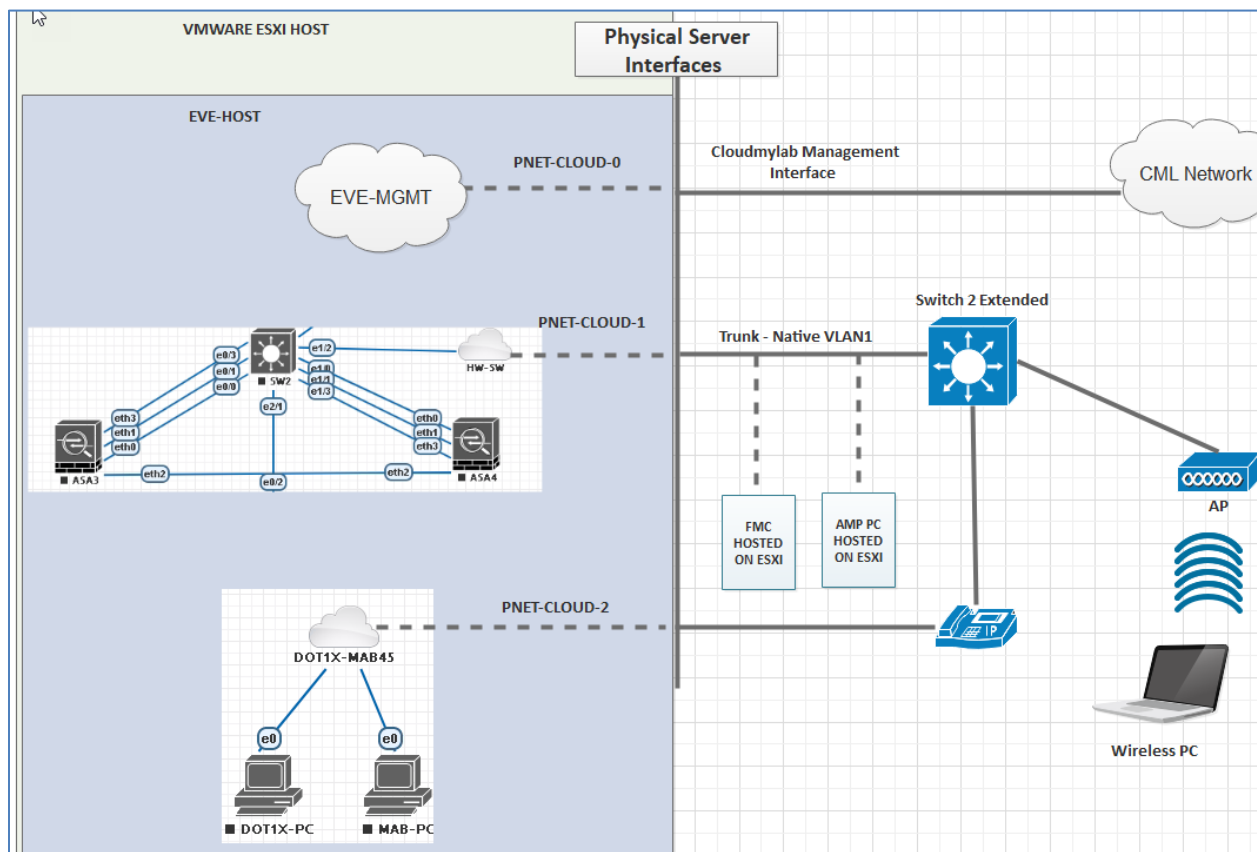
Security v5 Hybrid Lab Access Guide

Contents

Introduction.....	3
Design Premise.....	3
Audience	3
Disclaimer.....	3
Legal Liability	3
Do's and Don'ts	4
LAB Design.....	4
Topology.....	4
Getting Access to the POD.....	5
How to access EVE-NG topology.....	6
How to stop the Lab	8
Devices CLI Credentials.....	8
vSphere Access Details	8
How to access the devices.....	9
Guest Machine Reload.....	9
Quick Device Access	11
Logical Connection explained	13

LAB Design

Topology



The above topology has been built on EVE-NG community edition, ESX and real Hardware devices.

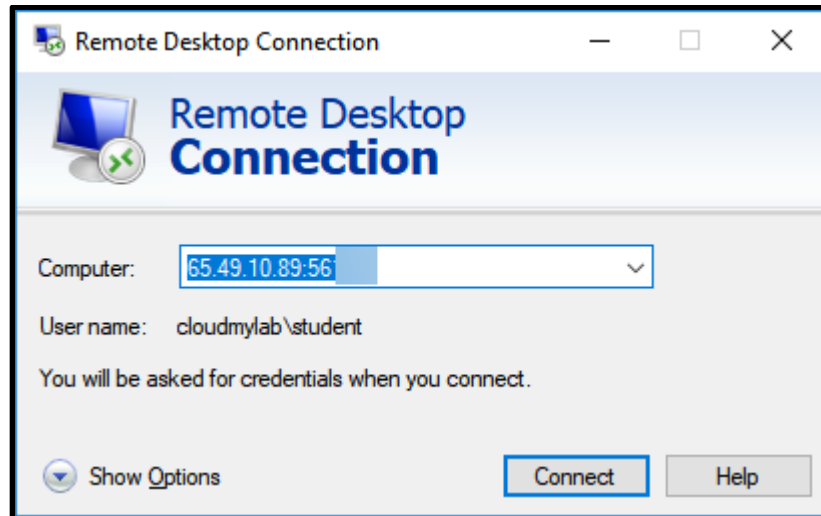
This lab has following hardware components

1. 1 X Cisco 3750-X/3650/3850 POE Switch
2. 1 X Cisco 79XX Phone
3. 1 X 35XX/37XX access point

This Lab has following Virtual Components

2. FMC, ISE AND AMP CLOUD Hosted Separately outside of EVE for optimized performance
3. Virtual Windows wireless PC with Wireless NIC

2. Login with the credentials provided



3. Once you login you will see a customized Desktop from where you can access all the devices

How to access EVE-NG topology

EVE-NG server address: Provided in access mail

Username: **admin**

Password: **eve**



- A) Select the lab from the list
- B) Once you click on the required lab, a preview opens on the right side of the page.
- C) Click on the **Open** button at the bottom of the preview. You will be redirected to the lab.
- D) To start the nodes, hover the mouse on the left sidebar then click on **More action > Start all nodes**. Wait for all the nodes to turn blue.
- E) Hover the mouse again over the sidebar and click on **Pictures** which will open up a dialog box. Click on the text inside the dialog box to open the topology.
- F) Click on the devices inside the topology to open their session.

How to stop the Lab

- A) Hover your mouse over the sidebar and click on **More actions** > **Stop all nodes**.
- B) Hover your mouse over the sidebar and click on **Close lab**.

Devices CLI Credentials

Table below contains the credentials to access CLI for the undermentioned devices:

Device Name	Username	Password
ISE	admin	ISEisC00L
vWLC	admin	Admin123
WSA	admin	ironport
FMC	admin	Admin123
NGIPS	admin	Admin123
AMP	admin	Admin123
Windows 7	user	Test123
Windows Server 2008	SRV\Administrator	Test123
Wireless PC	student	ccie123
CUCM	admin	eve4cisco
HW Switch	cisco	Cisco
AP	cisco	Cisco

Note: There is no password for ASA. Simply hit enter when prompted for password.

vSphere Access Details

Table below contains the credentials to access vSphere for managing FMC, AMP cloud and Wireless PC:

Check your email for vSphere server details

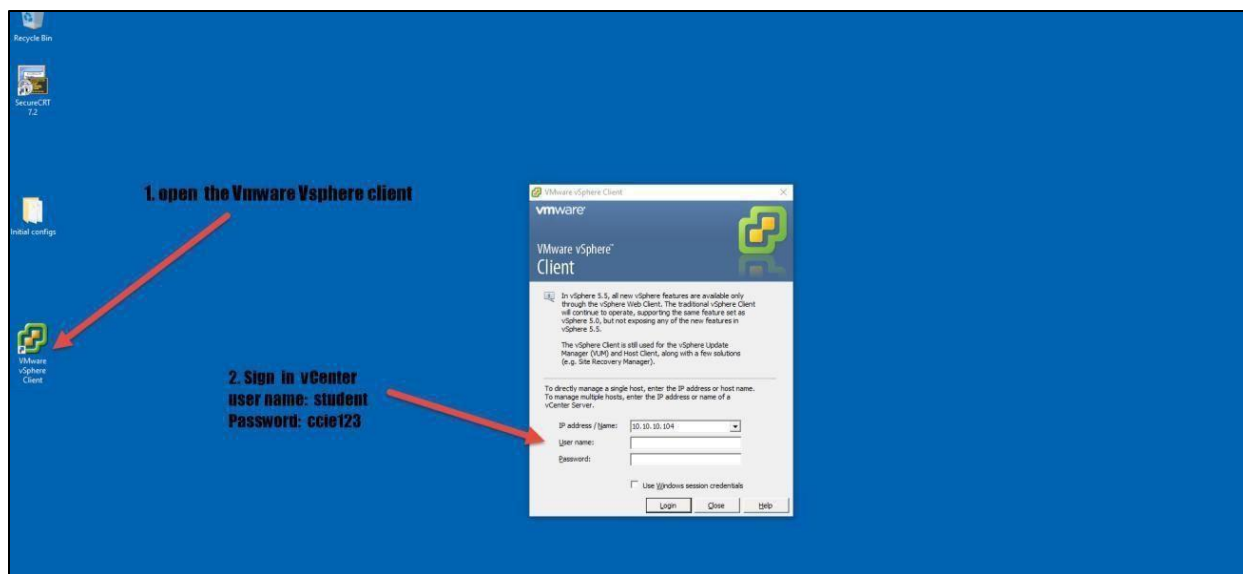
This section details how to access the physical and virtual devices

Guest Machine Reload

1. Once you are get the access to the Guest Desktop Environment

A.) Open the VMware vSphere client and login with the details in table below

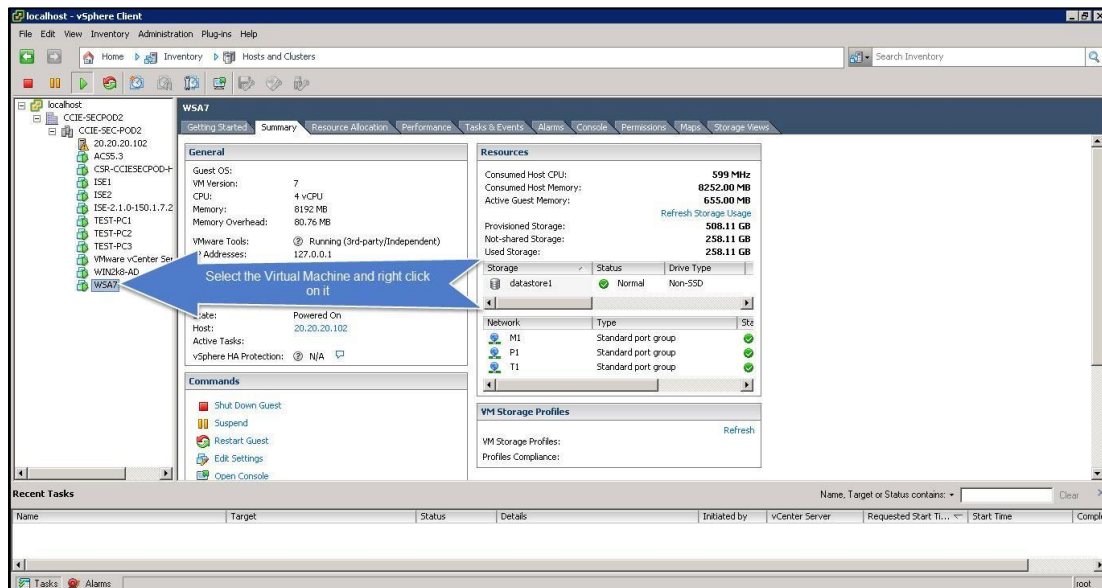
IP	Username	Password
192.168. 130.X	student	Ccie@123



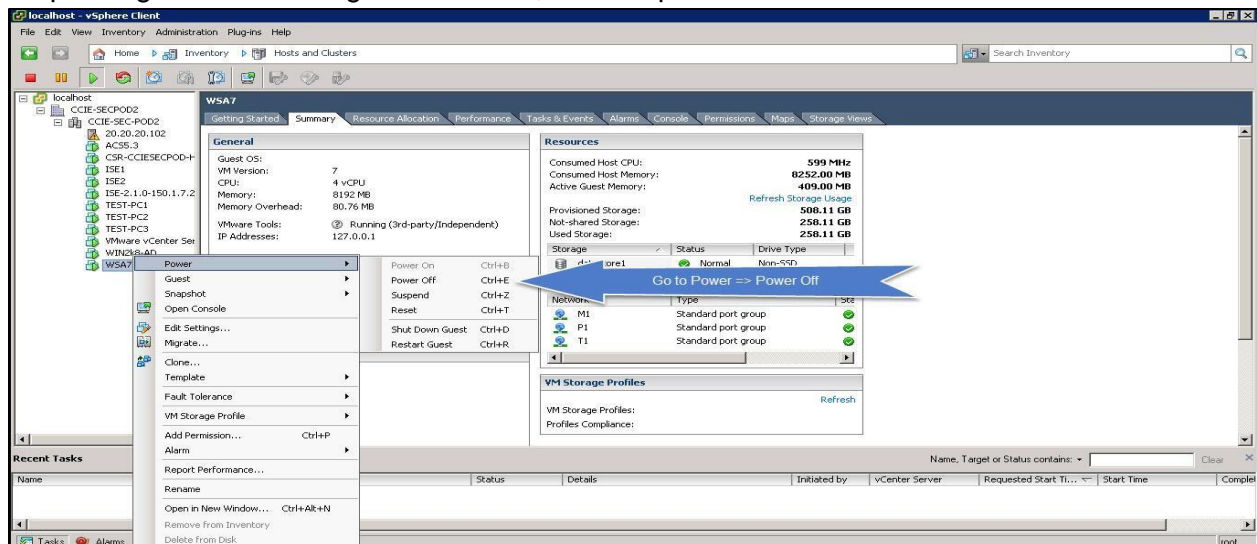
2. Reload the Guest Virtual Machines in the table below using the VMware vSphere Client before you start your lab.

The steps below explain how to reload a virtual Machine

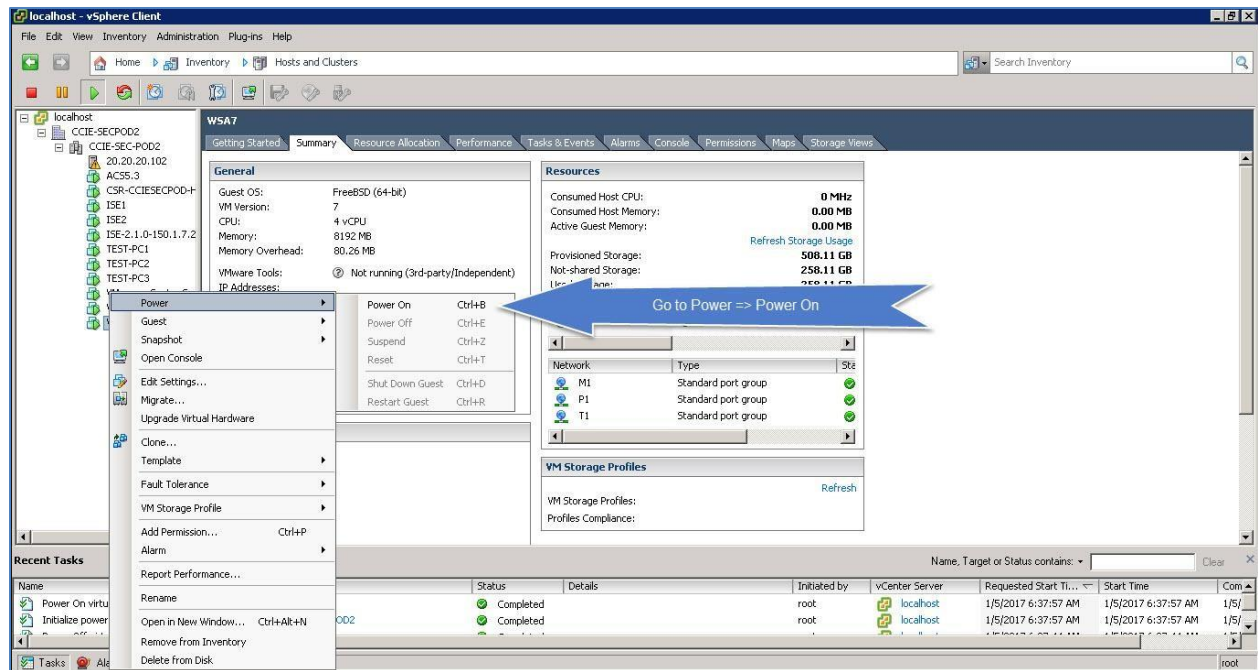
Step 1: After your successful login to ESX host, select the guest machine.



Step 2: Right Click on the guest machine, click on power and select Power Off



Step 3: Wait for VM to power off, then right click on the guest machine, click on power and select Power On

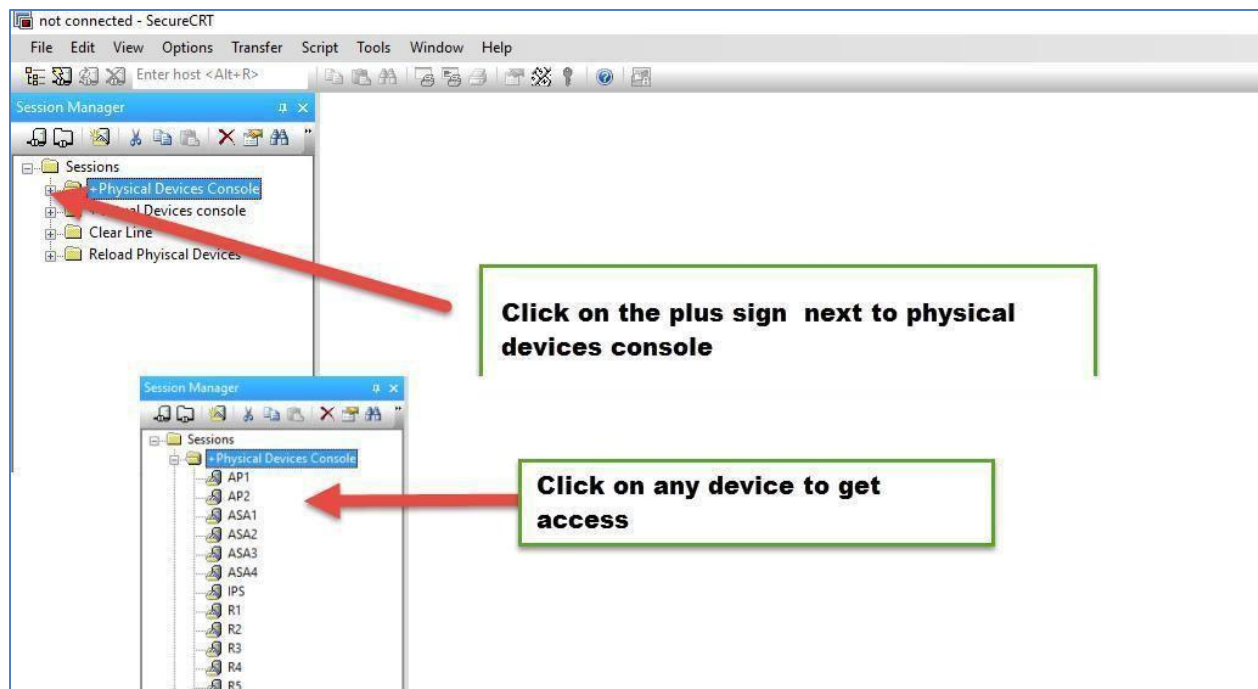


****NOTE: You Could restart your EVE Server from the Same console**

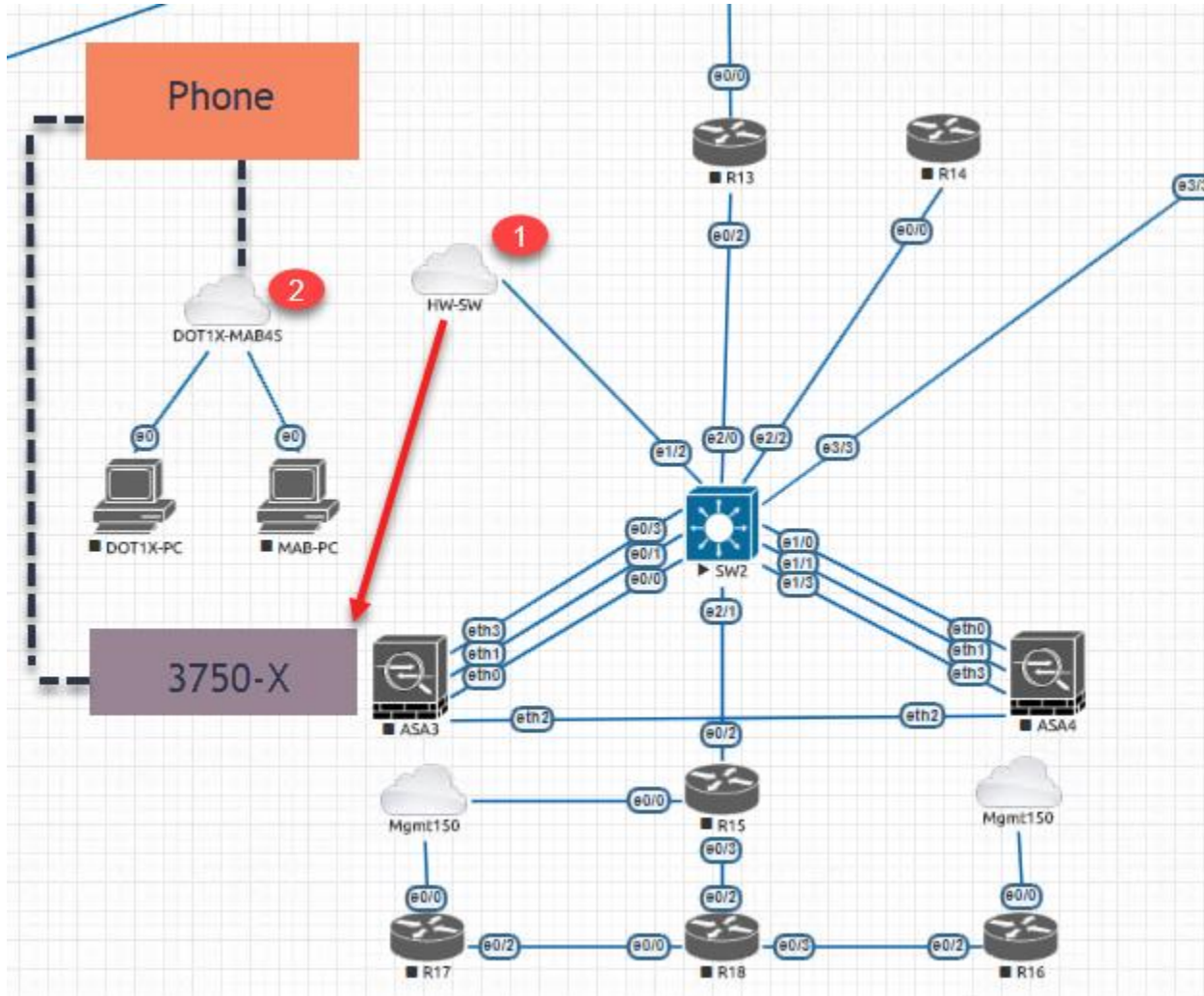
Quick Device Access

This section details on how to access the physical devices via CLI

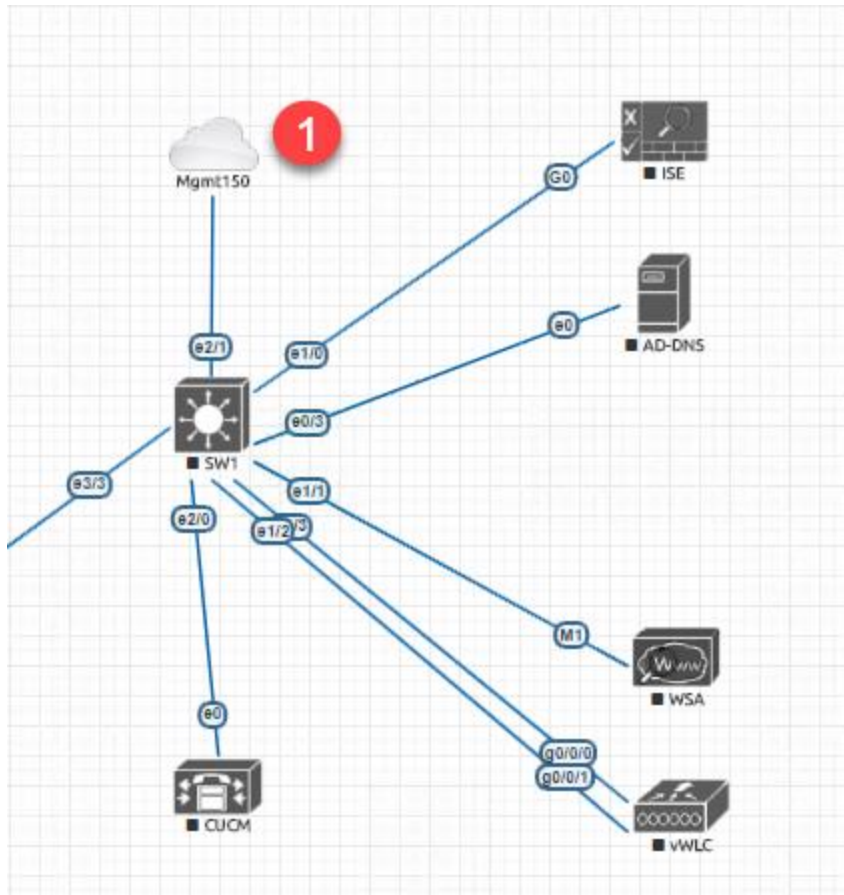
1. Click on SecureCRT



Logical Connection explained



1. Switch 2 is connected to the physical switch (3750-X) as shown in the image above at marker 1.
2. IP phone and AP are connected to 3750-X switch. IP phone is connected at port g1/0/14 and AP is connected at g1/0/21.
3. At marker 2, the IP phone is connected to the cloud which connects the Dot1X PC and the MAB PC.



1. At marker 1 in the above image, we have hosted FMC, ISE and AMP cloud outside EVE_NG. And, the traffic comes over VLAN 150.

-----END OF DOCUMENT-----